

# The BHF older patients with non-ST SEgment elevatIOOn MyocaRdial Infarction Randomised InterventioNal TreAtment Trial

## The BHF SENIOR-RITA Trial

### Discussant review

Simone Biscaglia

University Hospital of Ferrara, Italy

<https://elementrials.org>



September 1, 2024

# Why is SENIOR-RITA extremely important?

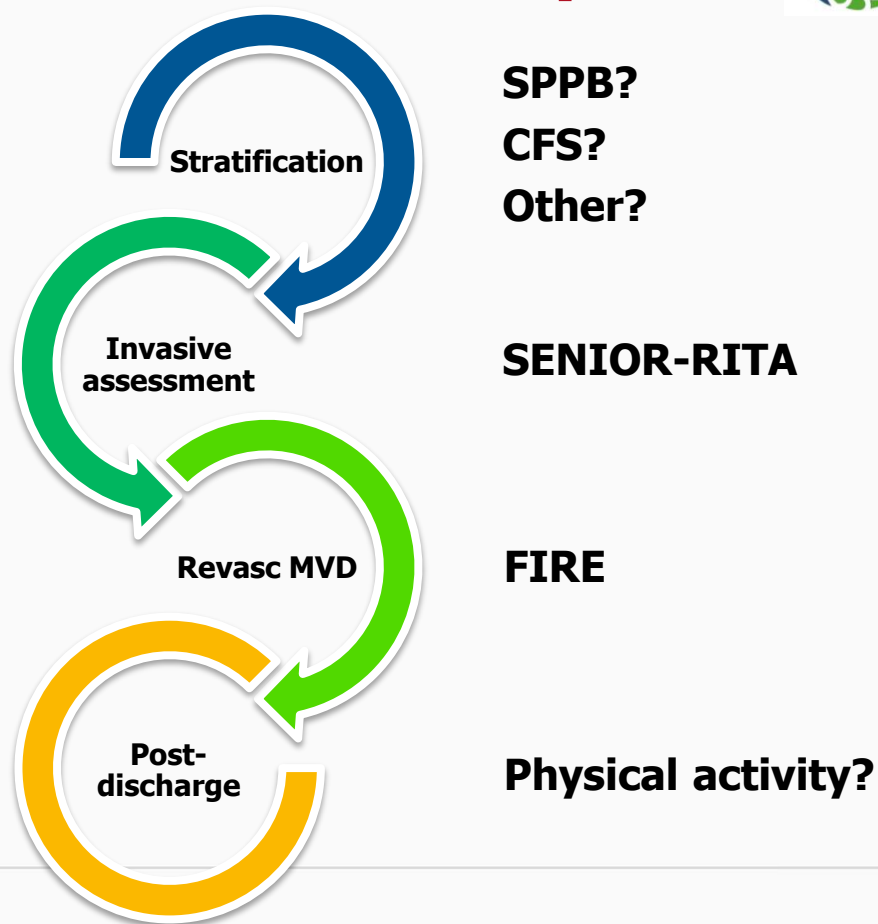
- **Unmet clinical need**
- **Unique population**
- **Long term follow-up**

# Why is SENIOR-RITA extremely important?

- **Unmet clinical need**
- **Unique population**
- **Long term follow-up**



# The continuum of the older ACS pt



# SENIOR-RITA Results



- **Safety of invasive approach**
- **Significant reduction in MI**
- **Significant reduction revascularization**

BUT...

- **No reduction in death**

# Risk profile matters

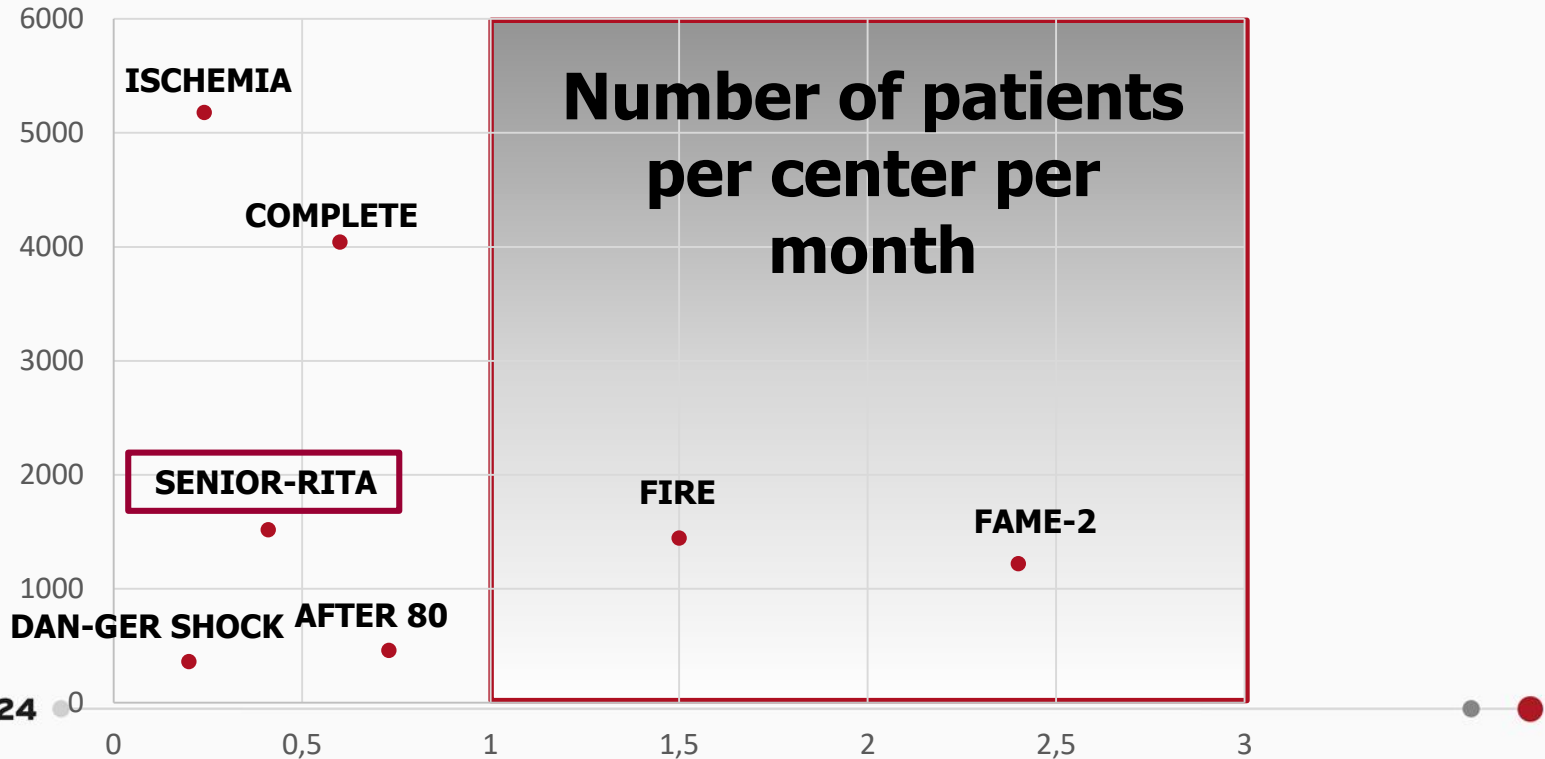


	<b>FIRE NSTEMI</b>	<b>SENIOR-RITA</b>
<b>Age</b>	82	82
<b>Comorbidities</b>	2	3
<b>Frailty</b>	10%	20-30%
<b>Female</b>	35%	45%
<b>Cognitive impairment</b>	<10%	60%
<b>GRACE score</b>	180	135

# Risk profile matters



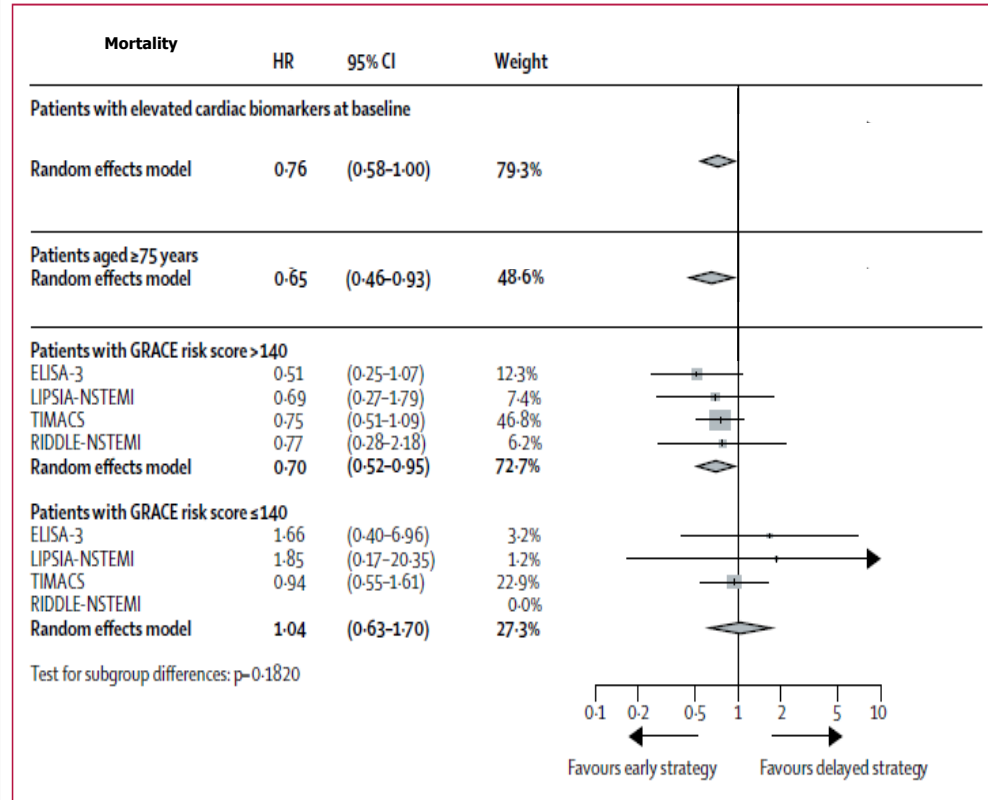
- 1518 patients in 77 months
- 55% of excluded patients underwent invasive treatment



# Time of revascularization matters

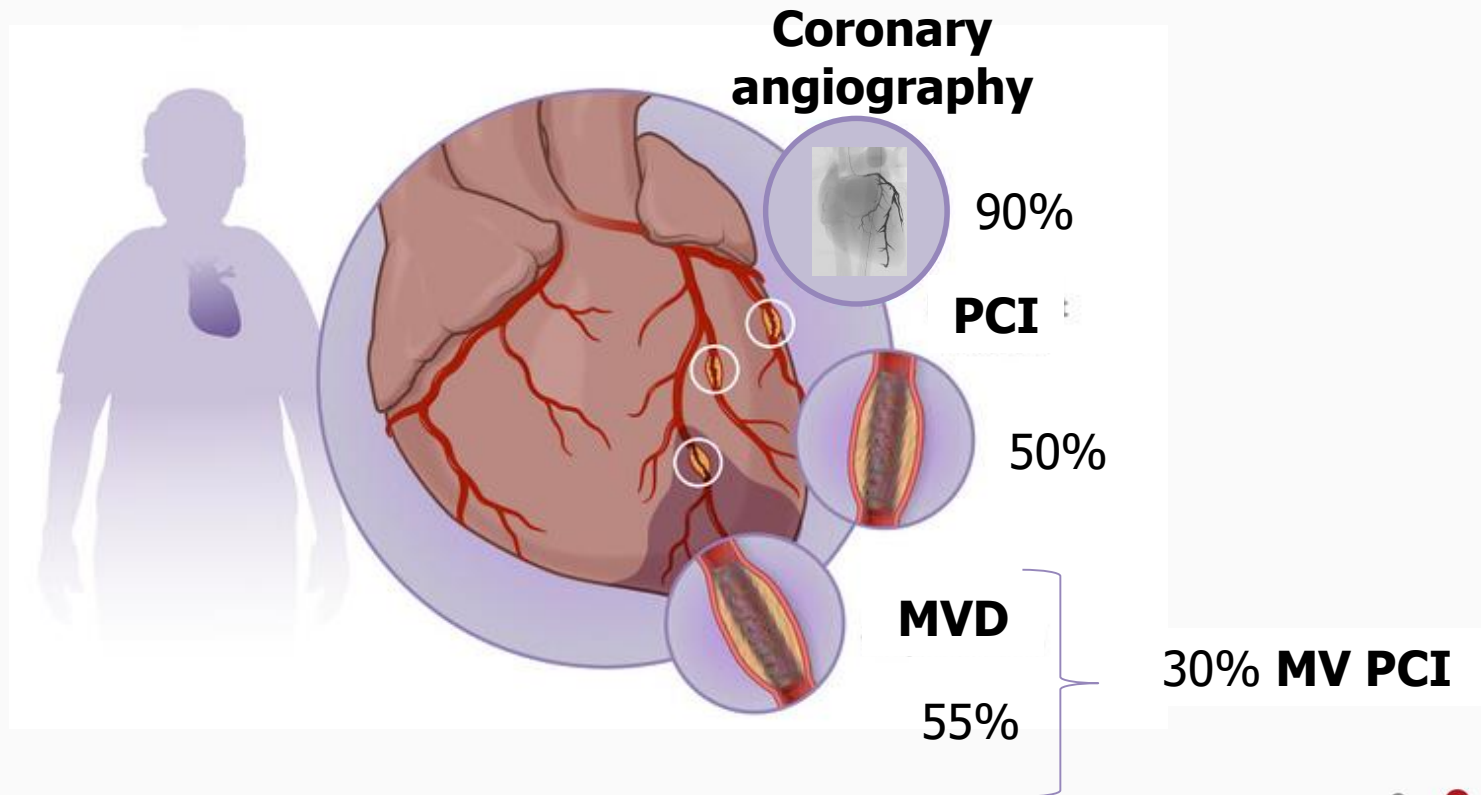


- **5 days from admission to PCI**
- **Lower mortality with early invasive strategy in NSTEMI<sup>1</sup>:**
  - 75+
  - GRACE > 140





# Complete revascularization matters



# SENIOR-RITA in context



	<b>FIRE NSTEMI</b>	<b>SENIOR-RITA</b>
<b>MVD</b>	100%	55%
<b>Time to angiography</b>	1 day	5 days
<b>Complete revasc</b>	≈100%	≈54%
<b>CV death</b>	↓ 1 year	=4 years
<b>MI</b>	↓ 1 year	↓ 4 years
<b>Revascularization</b>	↓ 1 year	↓ 4 years

# What matters



- **Risk profile**

- **Timing of revasc**

- **Physical activity?**

- **Complete revasc**

